

**AURY** *NH*

**NTE  
360**

Mining Truck



- » Gross Horsepower: 3500/3650hp
- » Payload: 330t

# NTE360

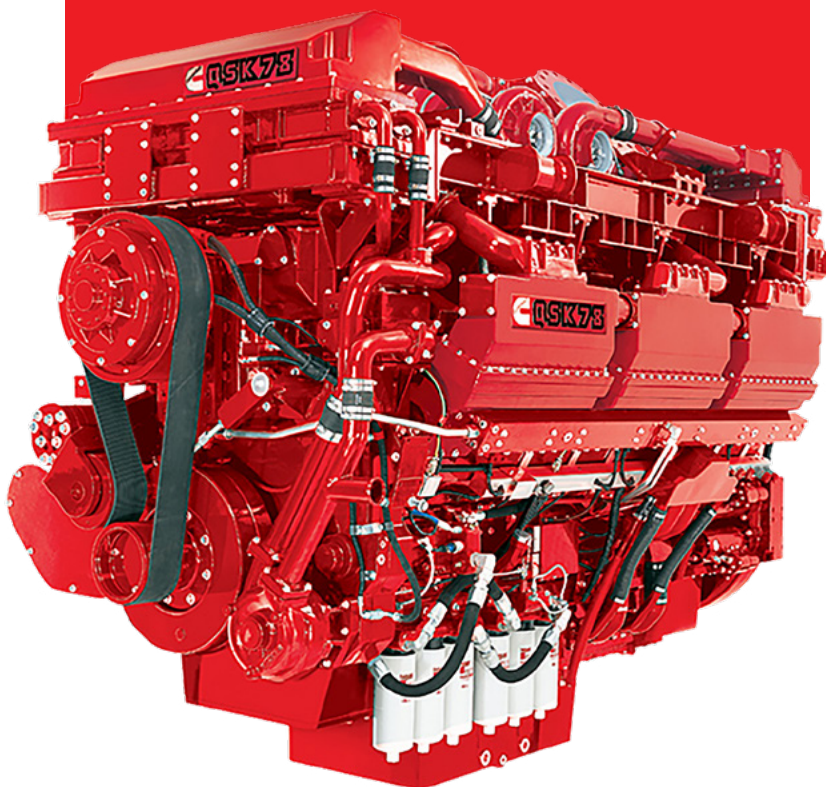
## Mining Truck

### >> ENGINES

Equipped Cummins QSK78 and MTU 20V4000 engine options and GE drive systems which are specifically designed for surface mining. The power package features high starting torque, high temperature resistant ability, low noise, ease of maintenance and lower operating costs.

Manufacturer	Cummins	MTU
Model	QSK78 Tier I	20V 4000 C22 Tier I
Operating Cycle	4	4
Number of Cylinders	18	20
Rated Power (SAE)	2610kW (3500 hp)	2722kW (3650hp)
Flywheel HP	2445kW (3278Hp)	2528kW (3390hp)
Weight Dry	10800kg (23810lb)	10240kg (22575lb)

Flywheel HP is the rated horsepower at the engine flywheel minus the average accessory losses. Accessory losses include radiator fan, battery charging alternator and pumps. Rating based on standard conditions in accordance with ISO 3046 and/(or) SAE J 1995.



### >> MAIN FRAME

The frame features a straight rail and seamless tubes cross beam design to eliminate sources of stress concentration. Variable section main rails reduce stress and increase frame fatigue life. The seamless tubes cross beam structure enhances the torsional resistance. A submerged arc welding process further reduces stress with full-penetration weld joints, which increases frame fatigue life.



### >> DRIVE SYSTEM

Alternator	5GTA61
Wheel Motor	5GDY134
Control Group	17KG564
Resistor Grid	17EM168
Gear Ratio	32.62:1
Max Speed	64.5 km/h (40 mph)
Number of Resistor	12
Maximum Continuous Rating	4476kW (6000hp)

The electric retarding system is equipped with air-cooled grid, which can provide efficient, safe and reliable slow force for the electric retarding system.

## >> SAFETY

The integrated ROPS (Rollover Protective Structure)/FOPS (Falling Objects Protective Structure) cab design and testing keeps the driver safe during hauling and loading. A traction control and anti-slip systems, assists the operator in slippery or dangerous conditions.

## >> COMFORT

Variable settings of the nitrogen-over-oil cylindrical suspension struts and independent front beam axle ensure a smooth, comfortable ride. The cab features include, generous cab space, back-lit dashboard, pressurized and filtered intake air system, two full-size comfit seats with full 180 degrees of vision provides a high level of driver 's comfort that leads to higher productivity.

## >> CAB

Integral FOPS/ROPS (Falling-object protective structures / Roll-over Protective Structure) Cab meets requirements of ISO 3449/ISO 3471. Features include deluxe interior, tinted safety glass, curved windshield for added field of view, tilt and telescopic steering wheel, heater and defroster and pressurized and filtered intake air for driver comfort. Sound exposure is at an equivalent sound level of less than 75 dB(A) and is tested per SAE J 1166 with doors and windows closed.



## >> POWER

Equipped Cummins QSK60 and MTU 20V4000C23 engine options and systems which are specifically designed for surface mining. The power package features high starting torque, high temperature resistant ability, low noise, ease of maintenance and lower operating costs.

## >> RELIABILITY

The specifically designed beam axle, main frame, dump body and other structures integrated with industry leading hydraulic and electrical components make the NTE360 running reliable and durable. The double cooling motor design makes the system operating highly efficient, safe and reliable. Pre-Lube system and low temperature starting protection could prevent engine from unexpected failure, which increase engine reliability and durability.

## >> SUPER STRUCTURE

Rugged one-piece "I" beam construction with closed bottom protects critical components from road and mud damage. Deck components are located to optimize driver visibility and access to the top of the engine, piping and electrical wiring allows for ease of maintenance.



## >> FRONT AXLE

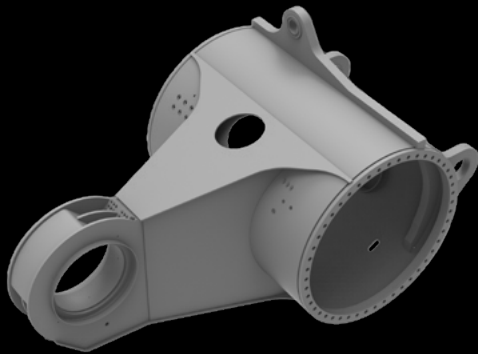
The axle is pin connected to the main frame with four longitudinal rods, two suspensions and a lateral stabilizer rod which reduces the stress acting on the main frame. The tyres maintain alignment regardless of suspension stroke and extends tyre life.

## > TYRES

Standard:	Michelin 56/80 R 63
Option:	Bridgestone 59/80 R63
Rim Size:	Std 41.00/5.0 330t

## >> AXLE BOX

The optimal designed axle box reduces structure weight without compromising strength. Nose-cone attachment features a patented, large two-piece bearing, which reduces contact pressure to less than 9653 kPa and extends bearing life.



## >> SUSPENSION

Four nitrogen-over-oil cylindrical suspension struts provide maximum driver comfort and minimize the impact on the frame during loading and running on the uneven surfaces and maximises truck performance.

Stroke: Front: 12.25 inch (311 mm)

Rear: 7.25 inch (184 mm)

Rear Axle Oscillation:  $\pm 5.3^\circ$



## >> HOIST SYSTEM

The electric control hoist system operates two, two-way, two-level hoist cylinders to realize the lifting, dropping, holding and floating functions of the body. The system is powered by a dual hydraulic pump that provides sufficient power to the system.

Power up Loaded: 28s

Power down: 17s

Filtration: High-pressure units with 6 micron (nominal) filtration assure the hydraulic system is reliable and safe. Hydraulic tank inlet contains a strainer with 100 mesh screening.

## >> STEERING SYSTEM

Full-time, medium - closed, load-sensing system operating two double-acting cylinders, supplied by accumulators that are replenished by a pressure-compensated piston pump. Auxiliary steering supplied by accumulator and meets ISO 5010.

Minimum turning radius: 17.4 m



## >> DUMP BODY

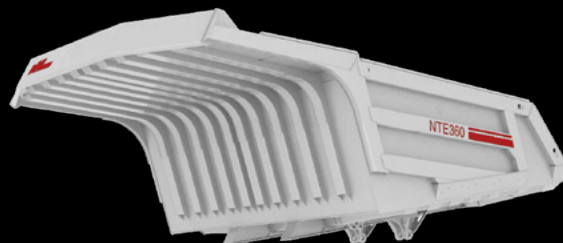
A horizontal bolster deep-V floor design lowers the center of gravity of the truck and improves maneuverability. Compared with horizontal floor body, deep-V floor design is more stable and stronger. Standard rock body incorporates 25 mm (1") bottom plate with 10 mm (3/8") side and 16 mm (5/8") front plate.

Struck (SAE): 211 m3

Heaped (SAE 2:1): 256 m3

Working: 232 m3

Optional body available based on material density.



**>> BRAKE SYSTEM**

Hydraulic brake actuation system features: service brakes (foot or hand operated), secondary brake (foot or hand operated), loading brake and spring apply, hydraulically released parking brake. Brake accumulators (3 unit) could provide enough brake force under emergency situation. The system would alarm when system pressure drops below 2100 PSI.

Service Brake Pressure: 2750 psi (18960kpa)

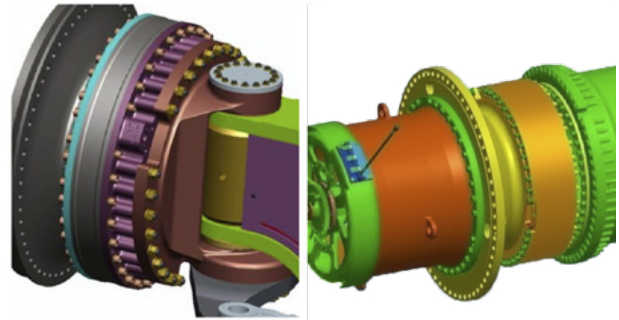
Service Brake Area / Brake:

F: 96187 cm<sup>2</sup> (14909 in<sup>2</sup>)

R: 115425 cm<sup>2</sup> (17891 in<sup>2</sup>)

Park Brakes — spring apply, hydraulic release.

Braking system meets the requirements of ISO 3450.



**>> 24V ELECTRICAL SYSTEM**

24 Volt system powered by six (6) twelve (12) volt batteries (3 series pairs in parallel). Battery isolation switch standard. Equipped with manual reset circuit breaker.

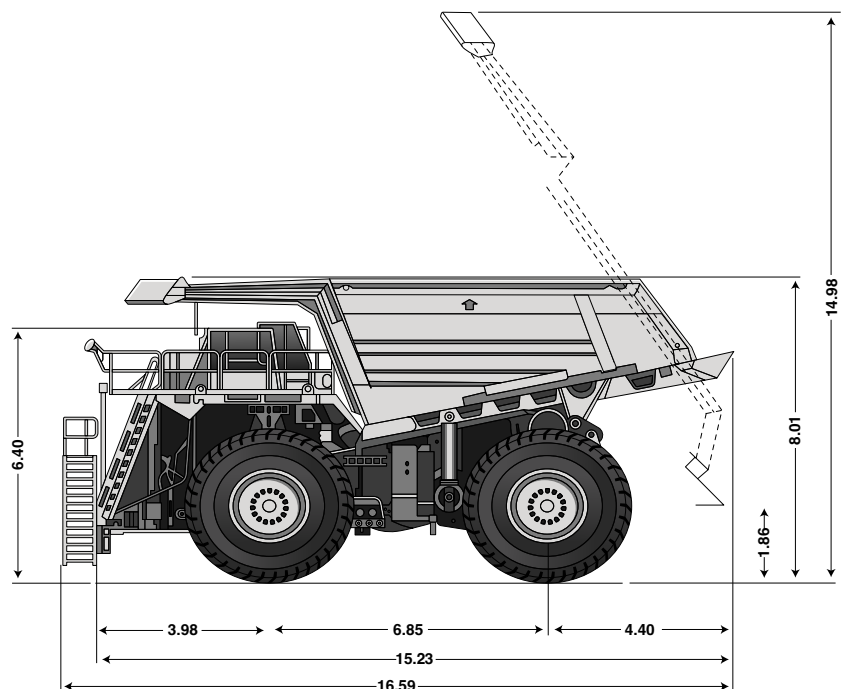
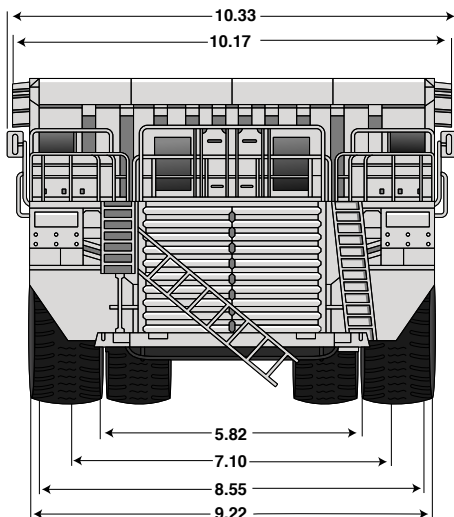
Lighting 24VDC

Starting 24VDC

Alternator 260Amp with voltage regulator

Provided a unique diagnostic software which can quickly and accurately find the 24V system fault.

**>> OVERALL DIMENSIONS IN METRES**



## >> STANDARD EQUIPMENT

### CAB

Acoustic lining

Door Locks

Floor Mat

ROPS/FOPS Protection

Electric Window

A/C /heater/Defroster

Interior Light

Illuminative Panel

Air Suspension Seat

Passenger Seat

Seat Belts

Steering Column, adjustable

Sun Visor

Tinted Glass

Wipers/Washers

Compartment

Radio and MP3 Player

### CONTROLS

Block Switch

Selector

Headlight / taillight switch

Key Switch, Power

Wiper switch

Loading Brake Switch

Parking Brake Switch

Stairway Light Switch

Engine Check Switch

Engine Start/stop switch

Hand Braking Switch

### INSTRUMENTATION GROUP

Engine Tachometer

Fuel Gauge

Hour meter

Engine oil pressure gauge

Speedometer

Voltmeter Engine coolant temperature

Flashing indicator

Air Cleaner Restriction

Warning indicator light/buzzer

Check Engine

Engine Stop

Cooling duct

Pressure Low

Fuel Level

High Hydraulic Temperature

Low Brake Pressure

Low Hydraulic Oil Level

Low Steering Pressure

Electric System Fault

Low Coolant level

Parking Brake

Body Hoist

Headlight Beam

24V Alternator Not Charging

Turn indicator light

High/Low Speed indicator

### GENERAL

Steering/braking accumulators

Two-stage air cleaner

Hoist control

Hand Brake Control

Retardation Control

Hydraulic control casing

Hydraulic Tank

Fuel Level

Coolant sight glass nut

Fuel sight gauge nut

Engine Pre lube

Low-temp start- protection

Dry disc brake/Wet brake

Exhaust Muffler

Quartz Halogen Headlight

Reversing light /buzzer

Steer/Retard/Running brake

Hoist/Reverse interlocking

Hoist/High speed interlocking

Parking Brake

Two-circuit brake

Rear View Mirrors

Rock Ejectors

Body safety chain

Engine maintenance ladder

Radiator, changeable core

Hydraulic filter, High pressure

Fuel Quick Fill

Deck safety guards

Extinguisher

Central lubrication

Auxiliary Dumping Connector

Hydraulic Cooler Exchanger

Temp-sensing Fuel cooler

## >> OPTIONAL EQUIPMENT

Trolley Drive	AVM	HYD filter pressure switch
Engine oil maintenance extend	Auto Weigh system	Central fire suppression
Engine cold start system	Vehicle anti-collision system	CAB air pressure
Fuel Heater	Superpower back lamp	Genuine leather drive seat
Body Liners	Maintenance illuminator	Wheel chocks
Body Heating	Fog lamp	Quick Rims
Body, enlarged capacity	12/24V DC point	
Date management system	Central Fill System	

## >> WEIGHTS

	Kg	
<b>EMPTY VEHICLE WEIGHT (EVW)</b>		
Front Axle	118580 kg	49%
Rear Axle	123420 kg	51%
Total	242000 kg	
<b>GROSS VEHICLE WEIGHT (GVW)</b>		
Front Axle	188760 kg	33%
Rear Axle	383240 kg	67%
Total	572000 kg	

## >> SERVICE DATA

<b>SERVICE CAPACITIES</b>	LITRES)
Engine Oil	268/315 L
Coolant	1050 L
Fuel	5300 L
Wheel Motor	85 L
Front Suspension	35.8 L
Rear Suspension	47.5 L
Hydraulic System	1200 L
Hydraulic Tank	850 L



# NTE 360

Mining Truck



## Aury NHL Mining Pty Ltd

HEAD OFFICE  
108 Mustang Drive  
Rutherford NSW 2320  
Phone: +61 2 4931 9348

MACKAY  
6 Progress Drive  
Paget Mackay QLD 4740

PERTH  
27 Purser Loop  
Bassendean WA 6054

MOÇAMBIQUE  
Stand 81, EN7, Chithatha,  
Moatize, Tete

[www.aurynhl.com.au](http://www.aurynhl.com.au)

 **AURY** **NHL**