

AURY 

**NTE
330**

Mining Truck



- » Gross Horsepower: 2700hp
- » Pay Load: 300t

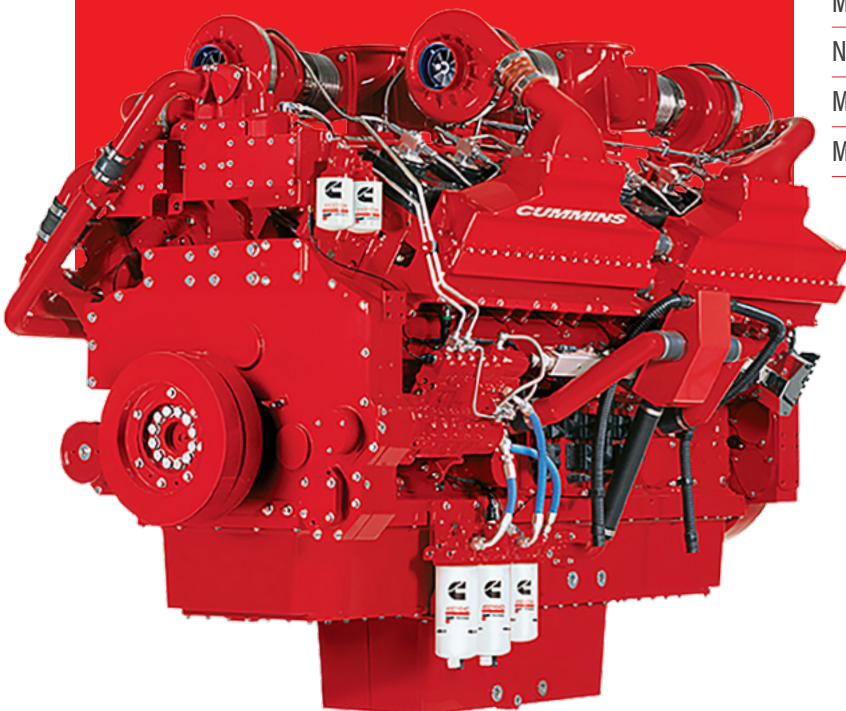
NTE 330

Mining Truck

>> ENGINE

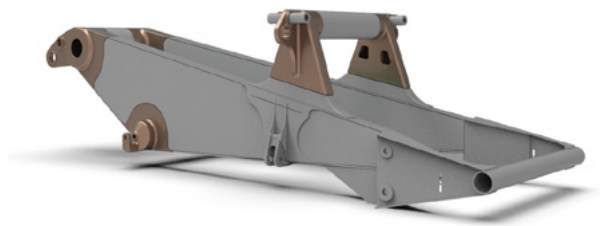
Manufacturer	Cummins	MTU
Model	QSK60 2-Stage	16V4000C23
Operating Cycle	4	4
Number of Cylinders	16	16
Rated Power (SAE)	2014kW (2700hp)	2237kW (3000hp)
Flywheel HP	1855kW (2487hp)	2103kW (2820hp)
Weight Dry	8854 kg	8100 kg

Flywheel HP is the rated horsepower at the engine flywheel minus the average accessory losses. Accessory losses include radiator fan, battery charging alternator and pumps. Rating based on standard conditions in accordance with ISO 3046 and/ (or) SAE J 1995.



>> MAIN FRAME

The frame features a straight rail and tubular center cross beam design to eliminate sources of stress concentration. Main frame box section rails are designed to reduce stress and increase frame fatigue life. The tubular center cross beam structure enhances the torsional resistance. A submerged arc welding process further reduces stress with full-penetration welded joints, which increases frame fatigue life.



>> DRIVE SYSTEM

Alternator	2700 hp/ Brushless
Wheel Motor	Siemens 1TB3026-2GBA03
Control Group	Siemens MMT330 Water cooled inverter
Resistor	
Grid	Siemens MMT330/ Double Blower Resistor Box
Gear Ratio	40.47:1
Max Speed	59 km/h (36.7 mph)
Number of Resistor	16
Maximum instantaneous Rating	4706kW (6311hp)
Maximum Continuous Rating	3907kW (5240hp)

The electric retarding system is equipped with air-cooled grid, which can provide efficient, safe and reliable slow force for the electric retarding system.

>> SAFETY

The integrated ROPS (Rollover Protective Structure)/FOPS (Falling Objects Protective Structure) cab design and testing keeps the driver safe during hauling and loading. A traction control and anti-slip systems, assists the operator in slippery or dangerous conditions.

>> COMFORT

Variable settings of the nitrogen-over-oil cylindrical suspension struts and independent front beam axle ensure a smooth, comfortable ride. The cab features include, generous cab space, back-lit dashboard, pressurized and filtered intake air system, two full-size comfit seats with full 180 degrees of vision provides a high level of driver 's comfort that leads to higher productivity.

>> CAB

Integral FOPS/ROPS (Falling-object protective structures / Roll-over protective Structure) Cab meets requirements of ISO 3449/ISO 3471. Features include deluxe interior, tinted safety glass, curved windshield for added field of view, tilt and telescopic steering wheel, heater and defroster and pressurized and filtered intake air for driver comfort. Sound exposure is at an equivalent sound level of less than 75 dB(A) and is tested per SAE J 1166 with doors and windows closed.



>> POWER

Equipped Cummins QSK60 and MTU 20V4000C23 engine options and systems which are specifically designed for surface mining. The power package features high starting torque, high temperature resistant ability, low noise, ease of maintenance and lower operating costs.

>> RELIABILITY

The specifically designed beam axle, main frame, dump body and other structures integrated with industry leading hydraulic and electrical components make the NTE330 running reliable and durable. The double cooling motor design makes the system operating highly efficient, safe and reliable. Pre-Lube system and low temperature starting protection could prevent engine from unexpected failure, which increase engine reliability and durability.

>> SUPER STRUCTURE

Rugged one-piece "I" beam construction with closed bottom protects critical components from road and mud damage. Deck components are located to optimize driver visibility and access to the top of the engine, piping and electrical wiring allows for ease of maintenance.

>> FRONT AXLE

The axle is pin connected to the main frame with four longitudinal rods, two suspensions and a lateral stabilizer rod which reduces the stress acting on the main frame. The tyres maintain alignment regardless of suspension stroke and extends tyre life.



>> TYRES

Standard: 53/80 R 63 ** Radial

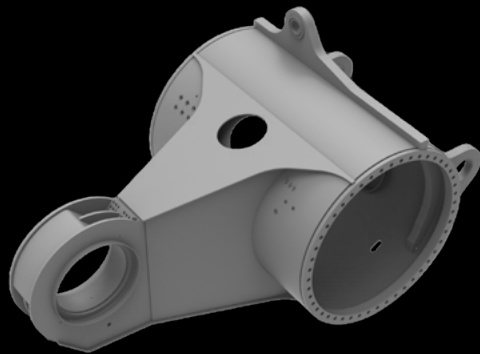
Options: 56/80 R 63 ** Radial

Rim Size: Std 38.00 (36.00) /5.0

Options: 41.00/5.0

>> AXLE BOX

The optimal designed axle box reduces structure weight without compromising strength. Nose-cone attachment features a patented, large two-piece bearing, which reduces contact pressure to less than 9653 kPa and extends bearing life.



>> SUSPENSION

Four nitrogen-over-oil cylindrical suspension struts provide maximum driver comfort and minimize the impact on the frame during loading and running on the uneven surfaces and maximisers truck performance.

Stroke: Front: 311 mm (12.25 inch)

Rear: 184 mm (7.25 inch)

Rear Axle Oscillation: $\pm 5.3^\circ$



>> HOIST SYSTEM

The electric control hoist system operates two, two-way, two-level hoist cylinders to realize the lifting, dropping, holding and floating functions of the body. The system is powered by a dual hydraulic pump that provides sufficient power to the system.

Power up Loaded: 28s

Power down: 17s

Filtration: High-pressure units with 6 micron (nominal) filtration assure the hydraulic system is reliable and safe. Hydraulic tank inlet contains a strainer with 100 mesh screening.

>> STEERING SYSTEM

Full-time, medium - closed, load-sensing system operating two double-acting cylinders, supplied by accumulators that are replenished by a pressure-compensated piston pump. Auxiliary steering supplied by accumulator and meets ISO 5010.

Minimum turning radius: 16.2 m



>> DUMP BODY

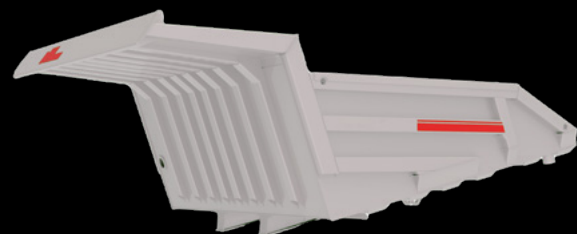
A horizontal bolster deep-V floor design lowers the center of gravity of the truck and improves maneuverability. Compared with horizontal floor body, deep-V floor design is more stable and stronger. Standard rock body incorporates 3/4" (19 mm) bottom plate with 3/8" (10 mm) side and 1/2" (13 mm) front plate.

Struck (SAE) 143 m³

Heaped (SAE 2:1) 218 m³

Working 175 m³

Optional body available based on material density.



>> BRAKE SYSTEM

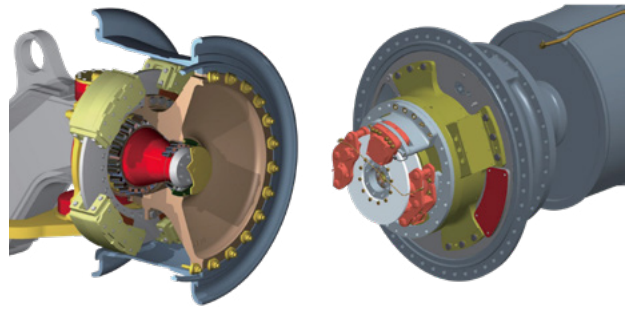
Hydraulic brake actuation system features: service brakes (foot or hand operated), secondary brake (foot or hand operated), loading brake and spring apply, hydraulically released parking brake. Brake accumulators (3) could provide enough brake force under emergency situation. The system would alarm when system pressure drops below 2100PSI.

Front Brakes — 4 calipers per wheel on 1308 mm wheel speed discs.

Rear Brakes — 2 calipers per wheel on 787 mm armature speed discs.

Park Brakes — spring apply, hydraulic release.

Braking system meets the requirements of ISO 3450.



>> 24V ELECTRICAL SYSTEM

24 Volt system powered by six (6) twelve (12) volt batteries (3 series pairs in parallel). Battery isolation switch standard. Equipped with manual reset circuit breaker.

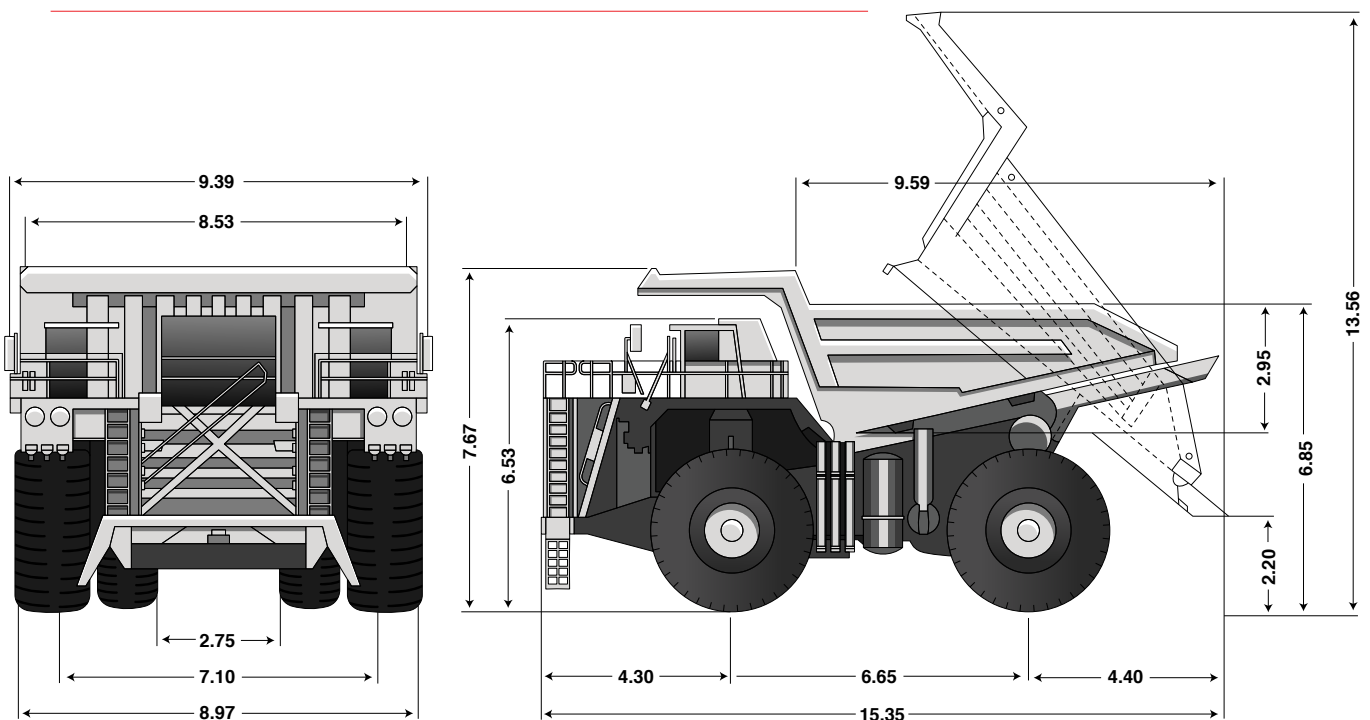
Lighting 24VDC

Starting 24VDC

Alternator 260Amp with voltage regulator

Provided a unique diagnostic software which can quickly and accurately find the 24V system fault.

>> OVERALL DIMENSIONS IN METRES



>> STANDARD EQUIPMENT

CAB

Standard Cab
Acoustic lining
Door Locks
Floor Mat
ROPS/FOPS Protection
Electric Window
A/C /heater/Defroster
Interior Light
Illuminative Panel
Air Suspension Seat
Passenger Seat
Seat Belts
Steering Column, adjustable
Sun Visor
Tinted Glass
Wipers/Washers
Compartment
Radio and MP3 Player

CONTROLS

Block Switch
Selector
Headlight/taillight switch
Key Switch, Power
Wiper switch
Loading Brake Switch
Parking Brake Switch
Stairway Light Switch
Engine Check Switch
Engine Start/stop switch
Hand Braking Switch

INSTRUMENTATION GROUP

Engine Tachometer
Fuel Gauge
Hour meter
Engine oil pressure gauge
Speedometer
Voltmeter Engine coolant temperature
Flashing indicator
Air Cleaner Restriction
Warning indicator light/buzzer
Check Engine
Engine Stop
Cooling duct
Pressure Low
Fuel Level
High Hydraulic Temperature
Low Brake Pressure
Low Hydraulic Oil Level
Low Steering Pressure
Electric System Fault
Low Coolant level
Parking Brake
Body Hoist
Headlight Beam
24V Alternator Not Charging
Turn indicator light
High/Low Speed indicator

GENERAL

Steering/braking accumulators
Two-stage air cleaner

Hoist control
Hand Brake Control
Retardation Control
Hydraulic control casing
Hydraulic Tank
Fuel Level
Coolant sight glass nut
Fuel sight gauge nut
Engine Pre lube
Low-temp start- protection
Dry disc brake/Wet brake
Exhaust Muffler
Quartz Halogen Headlight
Reversing light /buzzer
Steer/Retard/Running brake
Hoist/Reverse interlocking
Hoist/High speed interlocking
Parking Brake
Two-circuit brake
Rear View Mirrors
Rock Ejectors
Body safety chain
Engine maintenance ladder
Radiator, changeable core
Hydraulic filter, High pressure
Fuel Quick Fill
Deck safety guards
Extinguisher
Central lubrication
Auxiliary Dumping Connector
Hydraulic Cooler
Temp-sensing Fuel cooler

>> **OPTIONAL EQUIPMENT**

Body Liners	Fuel Heater	Trolley Drive
Frog light	Engine cold protected system	Vehicle Monitor system
Body Heating	Central Fill System	Flashing Amber strobe light
Around monitor	Superpower back light	Hubometer
Central fire suppression	Maintenance illuminator	Wheel chocks
Auto Weigh system	Body, enlarged capacity	Reflective strips

>> **WEIGHTS**

	Kg	
EMPTY VEHICLE WEIGHT (EVW)		
Front Axle	106330 kg	49%
Rear Axle	110670 kg	51%
Total	217000 kg	
GROSS VEHICLE WEIGHT (GVW)		
Front Axle	170610 kg	33%
Rear Axle	346390 kg	67%
Total	517000 kg	

>> **SERVICE DATA**

SERVICE CAPACITIES	LITRES
Engine Oil	280 L
Coolant	690 L
Fuel	4921 L
Wheel Motor	85 L
Front Suspension	35.8 L
Rear Suspension	47.5 L
Hydraulic System	1200 L
Hydraulic Tank	850 L



Specifications subject to change without notice.

NTE 330

Mining Truck



Aurynhl Mining Pty Ltd

HEAD OFFICE
108 Mustang Drive
Rutherford NSW 2320
Phone: +61 2 4931 9348

MACKAY
6 Progress Drive
Paget Mackay QLD 4740

PERTH
27 Purser Loop
Bassendean WA 6054

MOÇAMBIQUE
Stand 81, EN7, Chithatha,
Moatize, Tete

www.aurynhl.com.au

 **AURYNHL**