

**AURY** 

**NTE  
260**

Mining Truck



- » Gross Horsepower: 2500hp
- » Pay Load: 220 - 236t

# NTE 260

## Mining Truck

### >> ENGINE

Manufacturer	Cummins	MTU
Model	QSK60	16V4000C23R
Operating Cycle	4	4
Number of Cylinders	16	16
Rated Power (SAE)	1864kw (2500hp)	1865kw (2500hp)
Flywheel HP	1752kw (2350hp)	1752kw (2350hp)
Weight Dry	8570 kg	8100 kg

Flywheel HP is the rated horsepower at the engine flywheel minus the average accessory losses. Accessory losses include radiator fan, battery charging alternator and pumps. Rating based on standard conditions in accordance with ISO 3046 and/ (or) SAE J 1995.

### >> MAIN FRAME

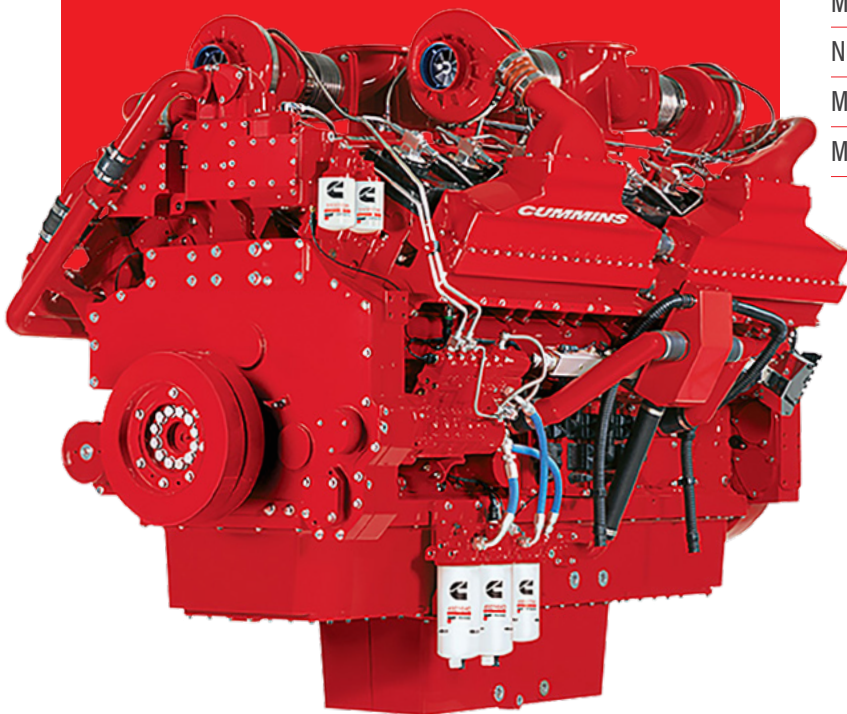
The frame features a straight rail and tubular center cross beam design to eliminate sources of stress concentration. Main frame box section rails are designed to reduce stress and increase frame fatigue life. The tubular center cross beam structure enhances the torsional resistance. A submerged arc welding process further reduces stress with full-penetration welded joints, which increases frame fatigue life.



### >> DRIVE SYSTEM

Alternator	2500 hp / Dual winding
Wheel Motor	Siemens 1TB3026-0GB03(M4)
Control Group	Siemens MMT260 IGBT/ Compact inverter
Resistor Grid	Siemens MMT260/ Double Blower Resistor Box
Gear Ratio	39.98:1
Max Speed	56 km/h (35 mph)
Number of Resistor	16
Maximum instantaneous Rating	3691kw (4950hp)
Maximum Continuous Rating	3206kw (4300hp)

The electric retarding system is equipped with air-cooled grid, which can provide efficient, safe and reliable slow force for the electric retarding system.



## >> SAFETY

The integrated ROPS (Rollover Protective Structure)/FOPS (Falling Objects Protective Structure) cab design and testing keeps the driver safe during hauling and loading. A traction control and anti-slip systems, assists the operator in slippery or dangerous conditions.

## >> COMFORT

Variable settings of the nitrogen-over-oil cylindrical suspension struts and independent front beam axle ensure a smooth, comfortable ride. The cab features include, generous cab space, back-lit dashboard, pressurized and filtered intake air system, two full-size comfit seats with full 180 degrees of vision provides a high level of driver 's comfort that leads to higher productivity.

## >> CAB

Integral FOPS/ROPS (Falling-object protective structures / Roll-over protective Structure) Cab meets requirements of ISO 3449/ISO 3471. Features include deluxe interior, tinted safety glass, curved windshield for added field of view, tilt and telescopic steering wheel, heater and defroster and pressurized and filtered intake air for driver comfort. Sound exposure is at an equivalent sound level of less than 75 dB(A) and is tested per SAE J 1166 with doors and windows closed.



## >> POWER

Equipped Cummins QSK60 and MTU 16V400023R engine options and drive systems which are specifically designed for surface mining. The power package features high starting torque, high temperature resistant ability, low noise, ease of maintenance and lower operating costs.

## >> RELIABILITY

The specifically designed beam axle, main frame, dump body and other structures integrated with industry leading hydraulic and electrical components make the NTE260 running reliable and durable. The double cooling motor design makes the system operating highly efficient, safe and reliable. Pre-Lube system and low temperature starting protection could prevent engine from unexpected failure, which increase engine reliability and durability.

## >> SUPER STRUCTURE

Rugged one-piece "工" beam construction with closed bottom protects critical components from road and mud damage. Deck components are located to optimize driver visibility and access to the top of the engine, piping and electrical wiring allows for ease of maintenance.

## >> FRONT AXLE

The axle is pin connected to the main frame with four longitudinal rods, two suspensions and a lateral stabilizer rod which reduces the stress acting on the main frame. The tyres maintain alignment regardless of suspension stroke and extends tyre life.



## >> TYRES

Standard: 50/80R57 \*\* Radial

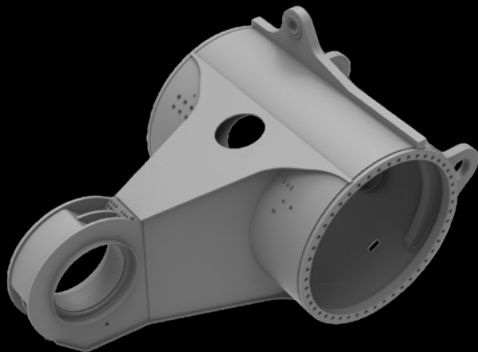
Options: 46/90R57 \*\* Radial

40.00R57 \*\* Radial

Rim Size: 32.00 x 57

## >> AXLE BOX

The optimal designed axle box reduces structure weight without compromising strength. Nose-cone attachment features a patented, large two-piece bearing, which reduces contact pressure to less than 9653 kPa and extends bearing life.



## >> SUSPENSION

Four nitrogen-over-oil cylindrical suspension struts provide maximum driver comfort and minimize the impact on the frame during loading and running on the uneven surfaces and maximisers truck performance.

Stroke: Front: 305 mm (12 inch)

Rear: 184 mm (7.25 inch)

Rear Axle Oscillation:  $\pm 5.70^\circ$



## >> HOIST SYSTEM

The electric control hoist system operates two two-way two level hoist cylinders to realize the lifting, dropping, holding and floating functions of the body. The system is powered by a dual hydraulic pump that provides sufficient power to the system.

Power up Loaded: 22s

Power down: 15s

Filtration: High-pressure units with 6 micron (nominal) filtration assure the hydraulic system is reliable and safe. Hydraulic tank inlet contains a strainer with 100 mesh screening.

## >> STEERING SYSTEM

Full-time, medium - closed, load-sensing system operating two double-acting cylinders, supplied by accumulators that are replenished by a pressure-compensated piston pump. Auxiliary steering supplied by accumulator and meets ISO 5010.

Minimum turning radius (SAE): 15.2 m



## >> DUMP BODY

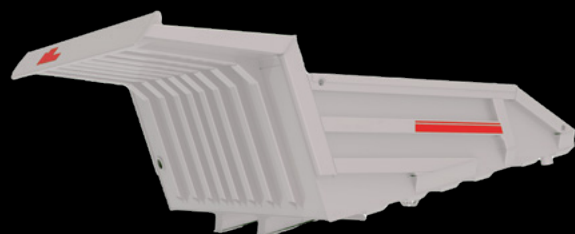
A horizontal bolster deep-V floor design lowers the center of gravity of the truck and improves maneuverability. Compared with horizontal floor body, deep-V floor design delivers stability and strength. Standard rock body incorporates 19 mm (3/4") bottom plate with 10 mm (3/8") side plate and 13 mm (1/2") front plate.

Struck (SAE): 114 m<sup>3</sup>

Heaped (SAE 2:1): 156 m<sup>3</sup>

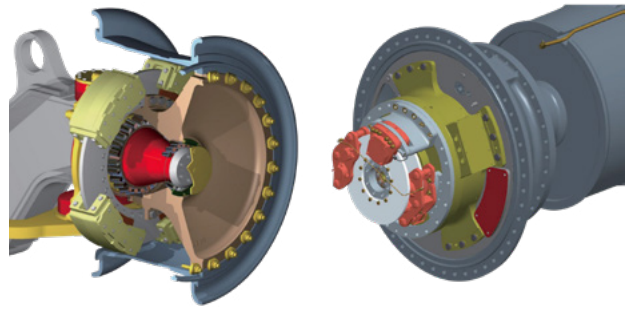
Working (2: 1): 140 m<sup>3</sup>

Optional body available based on material density.



## >> BRAKE SYSTEM

Hydraulic brake actuation system features: service brakes (foot or hand operated), secondary brake (foot or hand operated), loading brake and spring apply, hydraulically released parking brake. Brake accumulators (3) could provide enough brake force under emergency situation. The system would alarm when system pressure drops below 2100PSI.



Front Brakes - 4 calipers per wheel on 1168 mm (39") wheel speed discs.

Rear Brakes - 2 calipers per wheel on two 635 mm armature speed discs.

Park Brakes - spring apply, hydraulic release.

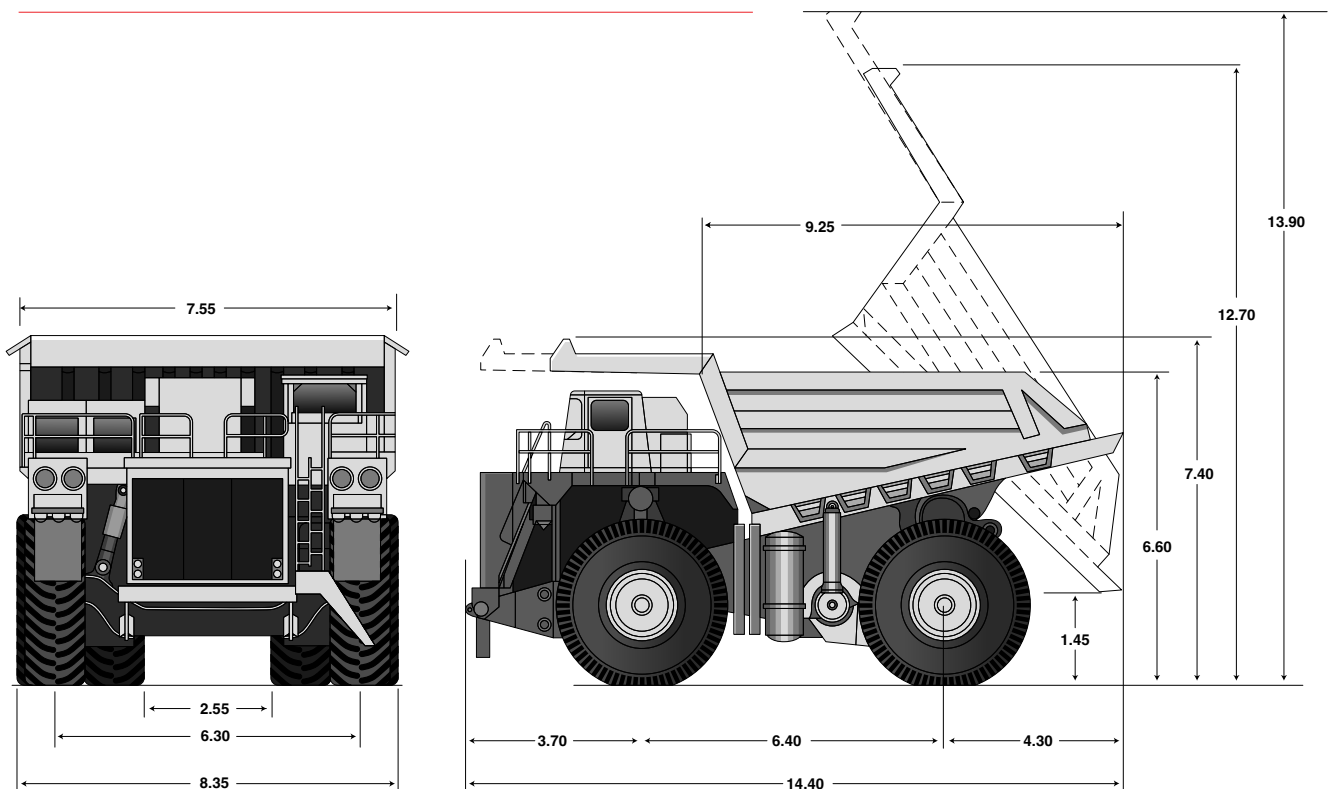
Braking system meets the requirements of ISO 3450.

## >> 24V ELECTRICAL SYSTEM

24 Volt system powered by six (6) twelve (12) volt batteries (3 series pairs in parallel). Battery isolation switch standard. Equipped with manual reset circuit breaker.

Lighting	24VDC
Starting	24VDC
Alternator	260Amp with voltage regulator

## >> OVERALL DIMENSIONS IN METRES



## >> STANDARD EQUIPMENT

### CAB

Acoustic lining

Door Locks

Floor Mat

ROPS/FOPS Protection

Electric Window

A/C 'heater/Defroster

Interior Light

Illuminative Panel

Air Suspension Seat

Passenger Seat

Seat Belts

Steering Column, adjustable

Sun Visor

Tinted Glass

Wipers/Washers

Compartment

Radio and MP3 Player

### CONTROLS

Block Switch

Selector

Headlight/taillight switch

Key Switch, Power

Wiper switch

Loading Brake Switch

Parking Brake Switch

Stairway Light Switch

Engine Check Switch

Engine Start/stop switch

Hand Braking Switch

### INSTRUMENTATION GROUP

Engine Tachometer

Fuel Gauge

Hour meter

Engine oil pressure gauge

Speedometer

Voltmeter

Engine coolant temperature

Flashing indicator

Air Cleaner Restriction

Warning indicator light/buzzer

Check Engine

Engine Stop

Cooling duct pressure

Low Fuel Level

High Hydraulic Temperature

Low Brake Pressure

Low Hydraulic Oil Level

Low Steering Pressure

Electric System Fault

Low Coolant level

Parking Brake

Body Hoist

Headlight Beam

24V alternator Not Charging

Turn indicator light

High/Low Speed indicator

### GENERAL

Steering/braking accumulators

Two-stage air cleaner

Hoist control

Emergency Brake Control

Retardation Control

Hydraulic control casing

Hydraulic Tank

Fuel Level

Coolant sight glass nut

Fuel sight gauge nut

Engine Pre lube

PW-temp start- protection

Dry disc brake/Wet brake

Exhaust Muffler

Quartz Halogen Headlight

Reversing light 'buzzer

Steer/Retard/Running brake

Hoist/Reverse interlocking

Hoist/High speed interlocking

Parking Brake

Two-circuit brake

Rear View Mirrors

Rock Ejectors

Body safety chain

Engine maintenance ladder

Radiator, changeable core

Hydraulic filter, High pressure

Fuel Quick Fill

Deck safety guards

Extinguisher

Central lubrication

Auxiliary Dumping Connector

Hydraulic Cooler

Temp-sensing Fuel cooler

>> **OPTIONAL EQUIPMENT**

Body Liners	Fuel heater	Trolley Drive
Brake auto apply	Engine cold start system	Vehicle anti-collision system
Body heating	Central Fill System	Composite braking
Rear backing-up monitor	Superpower back light	Cruise control
Central fire suppression	Maintenance illuminator	
Auto weigh system	Body, enlarged capacity	

>> **WEIGHTS**

	Kg	
<b>EMPTY VEHICLE WEIGHT (EVW)</b>		
Front Axle	86730 kg	49%
Rear Axle	90270 kg	51%
Total	177000 kg	
<b>GROSS VEHICLE WEIGHT (GVW)</b>		
Front Axle	136290 kg	33%
Rear Axle	276710 kg	67%
Total	413000 kg	

>> **SERVICE DATA**

<b>SERVICE CAPACITIES</b>	LITRES
Engine Oil	291 L
Coolant	662 L
Fuel tank	4921 L
Wheel Motor	135 L
Front Suspension	36.7 L
Rear Suspension	33.7 L
Hydraulic System	908 L
Hydraulic Tank	662 L



Specifications subject to change without notice.

# NTE 260

Mining Truck



## Aurynhl Mining Pty Ltd

HEAD OFFICE  
108 Mustang Drive  
Rutherford NSW 2320  
Phone: +61 2 4931 9348

MACKAY  
6 Progress Drive  
Paget Mackay QLD 4740

PERTH  
27 Purser Loop  
Bassendean WA 6054

MOÇAMBIQUE  
Stand 81, EN7, Chithatha,  
Moatize, Tete

[www.aurynhl.com.au](http://www.aurynhl.com.au)

 **AURYNHL**